



amar green energy

SUPPLIERS OF WIND
TURBINE COMPONENTS




VESTAS V47

SPARES SUPPLY BROCHURE

For Enquiries:

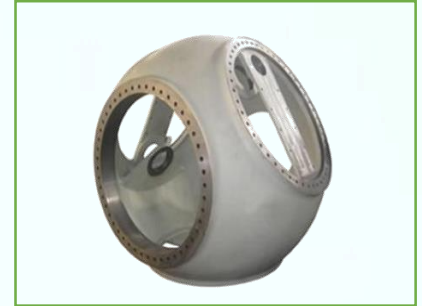
 harinair@amargreenenergy.com

 +1 (832) 405-9724

VESTAS V47 SPARES

ROTOR

OEM PART NO.	PART DESCRIPTION
731130	Hub Machined 2.5° Coning



MAIN BEARING HOUSING ASSEMBLY

OEM PART NO.	PART DESCRIPTION
734050	Main Bearing Housing Assembly
704800	Main Shaft Machined
734510	Main Bearing Housing Machined
107357	Front Main Bearing 23060 CC/W33
107355	Rear Main Bearing 24156 CC/W33
704723	Lock disc f. sealing, main bearing
704722	Support ring, main bearing
704711	Rear cover, main bearing
704720	Front sealing ring
704721	Rear sealing ring
104621	Outer lip seal RST 320 x 360 x 20
104620	Inner lip seal R 320 x 360 x 20
131510	Glycodur bushing, SKF GLY.PG 11011560 A
129089	Plastic bushing $\varnothing 99 \times \varnothing 80 \times 80$
704801	Rotor Locking Disc
157030	Washer 7089-30-200 HV tzn
152515	Hex Head Bolt M30 x 210 x 10.9



VESTAS V47 SPARES

152517	Hex Head Bolt M30 x 240 x 10.9
149300	Grease Nipple M8 x 1.25 H1A
154393	Nut ISO 4032 M36-8 tZn
155763	Washer 7416-36-tZn
152328	Hex head bolt ISO 4014 M36 x 140-8.8, tZn
108325	O-ring cord ø5 (MOQ : 25 Meter)
103640	Air Relief Cap
149497	Cap for grease nipple



ROTOR LOCK ACCESSORIES

OEM PART NO.	PART DESCRIPTION
704801	Rotor Locking Disc, Main Shaft
703812	Fish Plate, Machined
703811	Adjusting Fish Plate, Machined
707810	Rotor Locking Plate, Foundation
703810	Adjusting Fork, Rotor locking system
703813	Locking pin, Machined
159820	Split for pin Ø8 x Ø45
152986	Bolt ISO 4014 M20 x 100 - 8.8, tZn
157020	Washer ISO 7089 - 20 - 200 HV, tZn
154347	Nut ISO 4032 M20-8, tZn
152105	Hex. Head Bolt ISO 4014 M16 x 100-8.8, tZn
109782	Plastic Hose 5/8", 45mm
158054	Lock Nut ISO 7040 - M16 - A4 - 70 - NF



TRAVERSE ASSEMBLY

OEM PART NO.	PART DESCRIPTION
706360	Traverse machined
706621	Pitch, traverse holder
706675	Traverse, end cover
706150	Traverse anti rotation device
085460'	Slide shoe f. anti rotation device
108536	Damper Shim 75 x 32 x 29 Rubber
706696	End cover, anti rotation device
706699	Retaining plate f. slide-shoe
706697	Fitting for shims
706694	Holder for traverse anti rotation device
131510	Glycodur bushing, SKF GLY.PG 11011560 A
706610	Bearing flange, traverse holder
706615	Thread bar, M24
706651	Mounting bushing for traverse
155995-6	Shims to sliding shoes, 0.25 + 0.50 mm (0.010" + 0.050")
156701-2	Shims $\varnothing 11 \times \varnothing 17 \times 0.2 + 1$ mm
157012	Washer ISO 7416 - 12, tZn
152097	Hex. head bolt ISO 4014 M12 x 55-8.8, tZn
157252	Nut ISO 4032 M10-8, tZn
153108	Setscrew ISO 4017 M10 x 50-8.8, tZn
157010	Washer ISO 7089 - 10 - 200 HV, tZn
153397	Setscrew ISO 4017 M10 x 30-8.8, tZn
152318	Hex. head bolt ISO 4014 M30 x 120-8.8, tZn
157030	Washer ISO 7416 - 30, tZn



VESTAS V47 SPARES

702925	Washer $\varnothing 25 \times \varnothing 56 \times 10$
157198	Nut ISO 4032 M24-8, tZn
154504	Hex. head bolt ISO 4014 M12 x 80-8.8, tZn
153193	Hex. head bolt ISO 4014 M12 x 45-8.8, tZn
149497	Cap for grease nipple, M6
149306	Grease nipple, M6
152517	Hex. head bolt ISO 4014 M30 x 240-10.9, Delta
152501	Hex. head bolt ISO 4014 M12 x 100-8.8, tZn



CRANK ASSEMBLY

OEM PART NO.	PART DESCRIPTION
732025	Crank Premounted
702651	Crank
702663	Crank shaft
702661	Connecting rod, blade part
706661	Connecting rod, pitch part
085432'	Plain bearing, SKF GE 50 TXE-2LS, (steel/PTFE fabric)
91586	Shaft for connecting rod
706665	Thread block
108536	Packing $\varnothing 70 \times \varnothing 100 \times 8$
155401	Set screw ISO 4017 M6 x 30 - A4-70
156276	Washer ISO 7090 - 6- 140 HV, tZn
156089	Circlip, J75 DIN472 - 75 x 2.5
702680	Grease cap for connecting rod
702925	Washer $\varnothing 25 \times \varnothing 56 \times 10$
157600	Lock nut ISO 7040 M24 - 8 - NF, gal Zn



VESTAS V47 SPARES

156066	Circlip, J90 DIN472 - 90 x 3
108167	O-ring, 3 x 84.5
152986	Hex. head bolt ISO 4014 M20 x 100-8.8, tZn
157020	Washer ISO 7416 - 20, tZn
152268	Setscrew ISO 4017 M24 x 40-8.8, tZn
706926	Washer $\varnothing 25$ x $\varnothing 65$ x 10
155514	Shims $\varnothing 50$ x $\varnothing 62$ x 0.1
155513	Shims $\varnothing 50$ x $\varnothing 62$ x 0.2
706663	Bushing $\varnothing 50$ x $\varnothing 62$ x 20
108534	Packing $\varnothing 90$ x $\varnothing 60$ x 8
157030	Washer ISO 7416 - 30, tZn
157636	Lock nut ISO 7040 M30 - 8 - NF, gal Zn



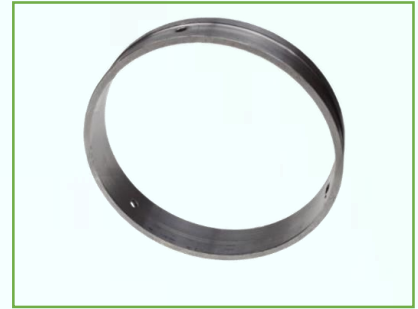
PITCH ASSEMBLY

OEM PART NO.	PART DESCRIPTION
706621	Pitch Traverse Holder
706625	Push Rod
706721	Rotation Safety Rail
706727	Middle Ring for pitch bearing
706763	Bushing for lip seal 65 X 30 X 24
706761	Bushing for pitch bearing 83 X 70 X 20
706725	Pitch Bearing Holder
706765	Steel Bush 60.2 x66.8x14 thick
706729	Shaft,Pitch bearing house/cyl. 60 dia
703617	Angle Iron f. tube clamp 50 X 50 X 80
706775	Cover for bearing house
100155	Stiffning Ring
706757	Counter nut, Adjustment nut - 185 Dia



VESTAS V47 SPARES

706769	Steel Bushing 120x140x29
706767	Steel Bushing 120x130x26
703616	Angle Iron Side Plate
703611	Side plate
703615	Angle Profile Steer
706503	Flange for carrying tube
155525	Washer 70 X90 X 3.5
706391	Upper & Lower Carrying Tube
706710	Pitch Bearing Cover
706730	Fork Connection,Pitch
706720	Pitch bearing House - Round
706740	Link head for piston rod
706755	Adjustment nut - Cast Iron
706750	Bearing house f.hydr.cyl - Square
156663	Washers M8
157010	WashersM 10
157016	Wahser -16 mm
158761	Nylon Washer, M8
153133	Hex. Bolt M8x16
153192	Hex.head Bolt M10x 25
155409	Hex. Bolt M8x10
155101	Hex.head bolt M8x50
153230	Hex. Bolt M10x40
154483	Hex.head bolt M10x80
154401	Hex Bolt M6 X 10
152188	Hex.head bolt M20x70
153321	Hex. Bolt M16x50
151056	Allen Screw M12x75
151567	Greb Screw M8x16
157716	Nylock Nut M 10
157619	Nylock Nut M 20



VESTAS V47 SPARES

157637	Nylock nut M30 X 2
85330	KM 13 Nut
85337	KM 23 Nut
107389	Cover Plate MB13 / Lock Washer KM 13
107398	Cover plate MB23 / Lock Washer KM 23
108015	Lip seal dia 65x90x12
108020	Lip seal dia 85x110x12
149300	Grease Nipple, M8
149306	Grease nipple, M6
156066	Circlip, 90x3 - Internal
156139	Circlip, 60 x 2 - External
156139	External Circlip 70 x 2.5
115491	Dia 89.8 X 70.2 X 0.1 (SS - Shim)
115492	Dia 89.8 X 70.2 X 0.2 (SS - Shim)
115493	Dia 89.8 X 70.2 X 0.3 (SS - Shim)
108540	170X130X8mm Thick Foam
155508	Fork Connection Shim120X148.9X0.1
155509	Fork Connection Shim 120X148.9X0.2
155510	Fork Connection Shim120X148.9X0.3
108252	O -ring 129.8 x3.5
108268	O-ring dia148.8x3.5
108329	O-ring dia128 x 12
897469	Washers20.5x47x8thk
108542	Packing dia 65 x 130 x6 - F.W
107238	Pitch bearingSKF31314/DF
85435	Link Bearing SKF GE 60 ES
107095	BearingSKF GAC 120 F
108590	Hydraulic Cylinder
706723	Guide Ring Rear
706722	Guide Ring Front



PITCH BEARING ARRANGEMENT

OEM PART NO.	PART DESCRIPTION
706055	Pitch Bearing Complete
706720	Pitch bearing housing
706730	Fork connection, pitch
706725	Pitch bearing holder
706761	Bushing for pitch bearing
706710	Pitch bearing cover
107389	Cover plate, MB13
107238	Pitch bearing SKF 31314/DF
706727	Middle ring for pitch bearing
706763	Bushing for lip seal.
706722	Guide ring, rot. safety, front
706723	Guide ring, rot. safety, rear
108015	Lip seal $\varnothing 65 \times \varnothing 90 \times 12$ type B1, NBR
108020	Lip seal $\varnothing 85 \times \varnothing 110 \times 12$ type B1, NBR
108252	O-ring, $\varnothing 3.53 \times \varnothing 129.8$
149497	Cap for grease nipple, M8
149300	Grease nipple, M8
155508	Shims $\varnothing 150 \times \varnothing 120 \times 0.1 - 0.2$
85330	KM-nut, KM13
157637	Lock nut ISO 7040 M 30 x 2 - 10 - NF, gal Zn
155101	Hex. head bolt ISO 4014 M8 x 50-8.8, tZn
156663	Washer ISO 7089 - 8 - 200 HV, tZn
151056	Allen screw ISO 4762 M12 x 80-8.8, black
108268	O-ring, $\varnothing 3.53 \times \varnothing 148.8$
155409	Set screw ISO 4017 M8 x 10 - A2-70
158761	Nylon washer, M8



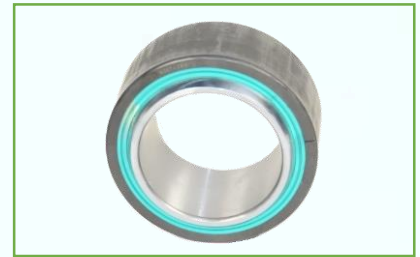
GEAR MOUNTING TORQUE ARM

OEM PART NO.	PART DESCRIPTION
734300	Gear Stay Assembly (Right)
734304	Gear Stay Assembly (Left)
704310	Torque arm plate, machined
704357	Fork, for torque arm
152323	Hexagon bolt ISO 4014 M33 x 180-8.8, tZn
704366	Distance bush short, Left
704358	Top flange, for torque arm, machined
107886	Disc spring, 50CrV4, TFV 200X102X12-5363/23
157016	Washer ISO 7416 - 16, tZn
157759	Lock nut ISO 7040 – M16 - 8 - NF, gal Zn
157030	Washer ISO 7416 – 30, tZn
704368	Control part f. V47 gear mounting
897434	Washer $\varnothing 17 \times \varnothing 47 \times 8$
152245	Hex. head bolt ISO 4014 M16 x 260-8.8, tZn
108532	Rubber disc $\varnothing 200 \times \varnothing 105 \times 20$
704359	Piston disc, for torque arm
107884	Disc spring, 200X102X8, spec.
704360	Spacer disc, for torque arm
704660	Connection rod, left, machined
707301	Main beam, right, machined
707302	Main beam, left, machined
157636	Lock nut ISO 7040 – M30 – 8 – NF, gal Zn
115516	Shim, 1 mm.
152320	Hex. head bolt ISO 4014 M30 x 140-8.8, tZn



VESTAS V47 SPARES

156066	Circlip, J90 DIN 472 - 90 x 3
108544	Packing, nitrile rubber
85436	Plain bearing GE 60 TRG
156136	Circlip, outer 60, DIN 471
704354	Shaft ø60, for torque arm
152338	Hex. head bolt ISO 4014 M33 x 270-8.8, tZn
704365	Distance bush long, Right
704367	Distance tube, for torque arm
704369	Connection rod, right, machined
157033	Washer ISO 7416 – 33, tZn



LINK HEAD ARRANGEMENT

OEM PART NO.	PART DESCRIPTION
706740	Link head for piston rod
706729	Shaft, pitch bearing housing/ cyl
85435	Link bearing, SKF GE 60 ES
706765	Steel bush ø60 x ø67 x 14
156066	Circlip, J90 DIN472 - 90 x 3
108542	Packing ø65 x ø130 x 8, NBR
157716	Lock nut ISO 7040 M10 - 8 - NF, gal Zn
157010	Washer ISO 7089 - 10 - 200 HV, tZn
154483	Hex. head bolt ISO 4014 M10 x 80-8.8, tZn
149497	Cap for grease nipple, M6
149306	Grease nipple, M6
156136	Circlip, A60 DIN471 - 60 x 2



YAW TOP ARRANGEMENT

OEM PART NO.	PART DESCRIPTION
707609	Yaw Top, machined
S085480	Front slide plate, PETP
S085483	Front radial slide plate, cast claw beam
S085494	Front Radial Slide Plate, +0,3
S085487	Rear radial slide plate, cast claw beam
S085488	Friction-and slide disc, PETP
S085495	Rear Radial Slide Plate, +0,3
S085496	Plate Slide Radial Front +0.6
S085497	Plate Slide Radial Front +1.0
S085498	Plate Slide Radial Rear +0.6
S085499	Plate Slide Radial Rear +1.0
707820	Front claw beam, cast
707840	Rear claw beam, cast
707815	Stopper for Slide Plate
723436	Plastic tube $\varnothing 75 \times 1.8 \times 31$
707831	Support and wear washer
707830	Guide for disc springs
723435	Screw for guide for disc springs
107778	Disc spring $\varnothing 70/\varnothing 40.5 \times 5$
	DIN 6914/15/16 M20 x 120-10.9, tZn
	Washer - 21 - HV300 - tZn - IK900194
	Hex. head nut ISO 7414 M20-10S, tZn



VESTAS V47 SPARES

	ISO 8734 A h6 dowel pin \varnothing 16 x 50
	Hex. head nut ISO 4032 M24 – 8, tZn
	Washer - 34 - HV300 - tZn - IK900194
	Hex. head bolt ISO 4014 M33 x 200-8.8, tZn
	Lubrication pipe
	Grease nipple, M8



TRANSMISSION COUPLING

OEM PART NO.	PART DESCRIPTION
	Coupling Assembly
734250	Composite Disc 340 Machined
734216	Intermediate Tube Machined
734244	Membrane
734231	Toothed Bush M24x3
734243	Clip for Membrane
734242	Holder for Membrane
734241	Shaft Buffer



BRAKE SYSTEM

OEM PART NO.	PART DESCRIPTION
734101	Brake Disc Machined
115760	Brake Pad
704671	Brake Caliper



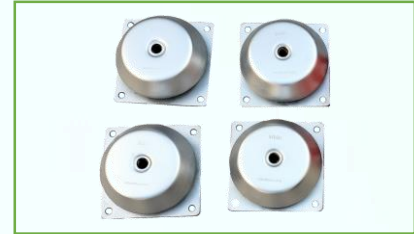
MAIN BEARING REBUILD KIT

OEM PART NO.	PART DESCRIPTION
107357	Front main bearing 23060 CC/W33
154393	Nut ISO 4032 M36-8, tZn
152328	Hex head bolt ISO 4014 M36 x 140-8.8, tZn
107355	Rear main bearing 24156 CC/W33
104621	Outer lip seal RST 320 x 360 x 20
104620	Inner lip seal R 320 x 360 x 20
704722	Support ring, main bearing
704720	Front sealing ring
704723	Lock disc f. sealing, main bearing
108325	O-ring cord ø5 x 25 Meter
704722	Support ring, main bearing
704711	Rear cover, main bearing
108325	O-ring cord ø5 x 25 Meter
704723	Lock disc f. sealing, main bearing
704721	Rear sealing ring
104620	Inner lip seal R 320 x 360 x 20
131510	Glycodur bushing, SKF GLY.PG 11011560 A
129089	Plastic bushing ø99 x ø80 x 80



GENERATOR REBUILD KIT

OEM PART NO.	PART DESCRIPTION
733690	Generator Hub
153189	Set screw ISO 4017 M12 x 25-8.8, tZn
116833	Vibration damper RA 1800 B
116837	Vibration damper
703635	Washer plate, f. generator
703633	Washer plate, t = 6 mm
706925	Washer $\varnothing 75 \times \varnothing 25 \times 10$
153568	Hex. head bolt ISO 4014 M20 x 110-8.8, tZn
	Bearing NU2320 E MP1A J30PC C3 FAG



VIBRATION ISOLATION COMPONENTS

OEM PART NO.	PART DESCRIPTION
116833/35	Vibration damper RA 1800 B
116837	Vibration damper
107886	Disc spring, 50CrV4, TFV 200X102X12-5363/23
107884	Disc spring, 200X102X8, spec.
704360	Spacer disc, for torque arm
116839	Hydraulic Rubber Mount $\varnothing 50$
114158	Panel Damper
734300	Gear Stay Assembly (Right) : Torque Arm
734304	Gear Stay Assembly (Left) : Torque Arm



VESTAS V47 SPARES

COVERS

OEM PART NO.	PART DESCRIPTION
704711	Rear cover, main bearing
706775	Cover for bearing house
733446	Cover for Kardan
703340	Cover for Shrink Disc
703341	Cover for Main Shaft Flange
703605	Cover for Pitch
704621	Cover for Brake
704627	Cover for Brake (Top)
704628	Cover for Brake (Bottom)
704627	Side Cover for Brake (Top)
704628	Side Cover for Brake (Bottom)



FRP COMPONENTS

OEM PART NO.	PART DESCRIPTION
	Nacelle Cover
	Nose Cone Spinner
	Nose Cone Seal



VESTAS V47 SPARES

HYDRAULIC UNIT

OEM PART NO.	PART DESCRIPTION
	Hydraulic Unit Assembly
	Accumulator
	Hydraulic Tank
	Solenoid Valve
	Level Guard Switch



CONSUMABLES

	Mobil SHC XMP 320 Gear Oil 208 Liters
	Air Breather Filter
	VISHAY Make 25kVAr 690V VISHAY Gas Filled Capacitor
	FG/Mahle, PX37-13-2-SMX10 HC35
	Grease catcher, blade bearing, Rollix, 107032
	Filter Element, Hydraulic, PI2108, V47-V52
	Filter, breather, Mahle, 852519 SM-L, single (replaces 1103111041)
	Mahle PIS 3092/5,0 EL.
	Chain Bag, 5/60
	Grease Cartridge LGWM 1/0.4 SKF
	Grease Klüberplex AG 11-462 1 Kg



VESTAS V47 SPARES

ACCESSORIES

OEM PART NO.	PART DESCRIPTION
835783	Wind Vane
872300	Anemometer
108590	Hydraulic Pitch Cylinder
146438	Flex Hose
115232	Motor ABB, MT.90L.24F.115-2/4
115253	Motor, MT90 1.9/0.35KW 690V, 60HZ
	Generator Alignment Tool
	Cable Block
	Packing Nitrile Washer 90 x 60 x 8 mm
	Packing Nitrile Washer 90 x 50 x 6 mm
	Packing Nitrile Washer 65 x 130 x 8 mm
	Packing Nitrile Washer 55 x 32 x 6 mm
	Ventillator Motor Assembly
	Generator Cooling Motor
	Generator Cooling Fan (SIEMENS)
	ABB, Contactor, A16-30-10, 220V
	ABB Thermal Replay TA25 DU 6.5A
	ABB Thermal Relay T25DU 2.2 A to 3.1A
	ABB Thermal Relay TA25DU 1.7A to 2.4 A
	4" COOLING FAN 230V AC
	Hose Clip



REACH US



435 Murphy Road, Suite B1#220,
Stafford, Texas-77477



harinair@amargreenenergy.com



+1 (832) 405-9724